



**SURUNKALI GEPATIT C DA JIGARNING PREMALIGNANT PATOMORFOLOGIYASI:
KLINIKOPATOLOGIK VA IMMUNOGISTOKIMYOVIY ALOQALAR**

**ПРЕДРАКОВЫЕ ПАТОЛОГИЧЕСКИЕ ИЗМЕНЕНИЯ ПЕЧЕНИ ПРИ
ХРОНИЧЕСКОМ ГЕПАТИТЕ С: КЛИНИКО-ПАТОЛОГИЧЕСКИЕ И
ИММУНОГИСТОХИМИЧЕСКИЕ КОРРЕЛЯЦИИ**

**PREMALIGNANT PATHOMORPHOLOGY OF THE LIVER IN CHRONIC HEPATITIS C:
CLINICOPATHOLOGICAL AND IMMUNOHISTOCHEMICAL CORRELATIONS**



Uktamboy Rustamboyevich Abdullayev-assistant
Urgench branch of the Tashkent Medical Academy
E-mail: ax08599@gmail.com
<https://orcid.org/0009-0002-5527-2612>
Phone:+998997037068

Abstract

Background: Chronic hepatitis C (CHC) remains an important etiological factor for liver cirrhosis and hepatocellular carcinoma (HCC). Premalignant morphological changes in the liver are mediated by progressive fibrosis, necroinflammatory activity, immune-cell infiltration, and activation of Kupffer cells and hepatic stellate cells [1–4].

Aim: To evaluate premalignant pathomorphological changes in the liver of patients with chronic hepatitis C and to determine relationships between histological activity, fibrosis stage, and immunohistochemical markers of inflammation and fibrogenesis.

Methods: A retrospective cohort analysis of liver biopsy specimens from 60 adult patients with serologically confirmed CHC was performed. Histological grading and staging were assessed using the Desmet/METAVIR-based approaches (fibrosis F0–F4) and the IGA activity score. In 20 cases, immunohistochemistry (IHC) for Ki-67 and smooth muscle actin (SMA) was conducted; staining intensity and percentage of positive cells were assessed semi-quantitatively. Morphometric analysis employed a 100-point grid in 20 high-power fields per case. Statistical testing used Student’s t-test and Pearson correlation ($p < 0.05$).

Results: Fibrosis stages were distributed as follows: F0–F1 (16.6%), F2 (26.6%), F3 (33.3%), and F4/cirrhosis (23.3%). Higher inflammatory activity was associated with interface hepatitis, lobular necrosis, and dense portal infiltration. A moderate positive correlation was observed between fibrosis stage and IGA score ($r = 0.61$, $p < 0.05$). Ki-67 expression was predominantly moderate (85.22%), with expansion of Ki-67-positive stromal/mesenchymal cells in advanced fibrosis. SMA expression increased in periportal and septal zones, reflecting stellate cell activation and fibrogenesis [5–8].



TOSHKENT TIBBIYOT AKADEMIYASI URGANCH FILIALI
JANUBIY OROLBO‘YI TIBBIYOT JURNALI
2 - TOM, 2 - SON. 2026
14.00.00 - TIBBIYOT FANLARI ISSN: 3093-8740

Conclusion: CHC is characterized by a spectrum of premalignant liver changes including progressive fibrosis, increasing necroinflammatory activity, immune-cell infiltration, and activation of mesenchymal components. Integrating routine histology with IHC markers (Ki-67, SMA) can improve HCC risk stratification and support individualized surveillance strategies [2,3,7,9,19].

Keywords: chronic hepatitis C; liver fibrosis; hepatocellular carcinoma; premalignant pathology; Ki-67; SMA; Kupffer cells; immunohistochemistry.

Introduction

Chronic hepatitis C (CHC) is one of the leading causes of progressive liver fibrosis, cirrhosis, and hepatocellular carcinoma (HCC) worldwide [1,2,19]. The transition from chronic inflammation to malignant transformation is driven by a long-term interplay of necroinflammatory activity, immune-cell infiltration, stellate cell activation, and extracellular matrix remodeling [3,4,22]. Histopathological evaluation of CHC using standardized scoring systems (including METAVIR/Desmet-based approaches) remains an essential tool for estimating fibrosis stage, inflammatory activity, and associated parenchymal alterations such as steatosis and cholestasis [4,6,20]. In addition, immunohistochemical (IHC) methods expand diagnostic and prognostic capacity by assessing proliferative activity (Ki-67), myofibroblast/stellate cell activation (SMA), and immune-cell populations (e.g., CD8⁺ lymphocytes) [5,7,8,18]. However, region-specific clinicopathological datasets remain limited in some populations, including Central Asia. This study provides a combined histological and immunohistochemical characterization of premalignant changes in CHC liver biopsies in a regional cohort.

Materials and Methods

Study design: Retrospective cohort analysis of liver biopsy specimens. **Patients:** Sixty adult patients (age ≥ 18 years) with serologically confirmed hepatitis C (anti-HCV positive and HCV RNA positive) were included. Exclusion criteria were other etiologies of hepatitis (HBV/HDV, autoimmune hepatitis), alcohol-related or drug-induced liver disease.

Clinical data: Age, sex, duration of disease, biochemical parameters (ALT, AST, bilirubin), and scoring systems (Child–Pugh, MELD when available) were extracted from medical records.

Histology: Biopsy specimens were fixed in formalin, paraffin-embedded, sectioned, and stained with hematoxylin–eosin; additional stains were used as required. Fibrosis was scored as F0–F4, and inflammatory activity was evaluated with an IGA score considering portal, periportal, and lobular infiltration [4,6,24]. Steatosis (microvesicular/macrovesicular; focal/diffuse) and cholestasis were assessed semi-quantitatively.

Immunohistochemistry: IHC was performed in 20 cases using Ki-67 (proliferation marker) and SMA (stellate cell/myofibroblast activation). Staining intensity and proportion of positive cells were graded (0–3 points). Kupffer cell activity was additionally evaluated morphometrically.

Morphometry: A 100-point ocular grid at $\times 600$ magnification was used; 20 high-power fields were analyzed per specimen.

Statistics: Student’s t-test and Pearson correlation were applied; $p < 0.05$ was considered significant.

Results

Table 1. Distribution of fibrosis stages in chronic hepatitis C patients (n=60).

Fibrosis stage (F)	Number of patients	Percentage (%)
F0–F1	10	16.6
F2	16	26.6
F3	20	33.3
F4 (cirrhosis)	14	23.3

Inflammatory activity assessed by the IGA score was categorized as minimal (1–3 points), moderate (4–7 points), and high (8–12 points). Patients with high activity more frequently exhibited periportal interface hepatitis, multifocal lobular necrosis, and dense lymphoplasmacytic infiltration in portal tracts. A moderate positive correlation was observed between fibrosis stage and IGA score ($r=0.61$, $p<0.05$), indicating that increased necroinflammation is associated with accelerated fibrogenesis [3,4,23].

Parenchymal and sinusoidal alterations included granular and hydropic degeneration of hepatocytes, as well as steatosis (predominantly microvesicular, with macrovesicular patterns in a subset). Sinusoidal dilatation, endothelial swelling, and erythrocyte aggregation were observed. Kupffer cells showed hyperplasia and increased cytoplasmic volume, with clustering in more active cases. Morphometry indicated higher Kupffer cell density in advanced fibrosis groups (F3–F4) compared with early stages (F0–F1) ($p<0.05$) [7,8,22].

Table 2. Semi-quantitative distribution of Ki-67 immunexpression in CHC liver biopsies (subset, n=20).

Ki-67 expression level	Percentage (%)	Interpretation
Low	9.12	Limited proliferative activity
Moderate	85.22	Predominant pattern
High	5.66	Enhanced proliferation

Ki-67 positivity was detected in hepatocytes of periportal and perilobular zones and in stromal/mesenchymal cells (lymphocytes, macrophages, fibroblasts). The proportion of Ki-67-positive mesenchymal cells reached 63.34% at $\times 200$ magnification, suggesting active stromal remodeling in fibrogenesis. With advancing fibrosis, Ki-67-positive cells expanded around fibrous septa and regenerative nodules, forming a proliferative premalignant background [5,7,21].

Figure 1. Low-grade Ki-67 positive expression pattern in liver tissue of chronic hepatitis C (representative image).

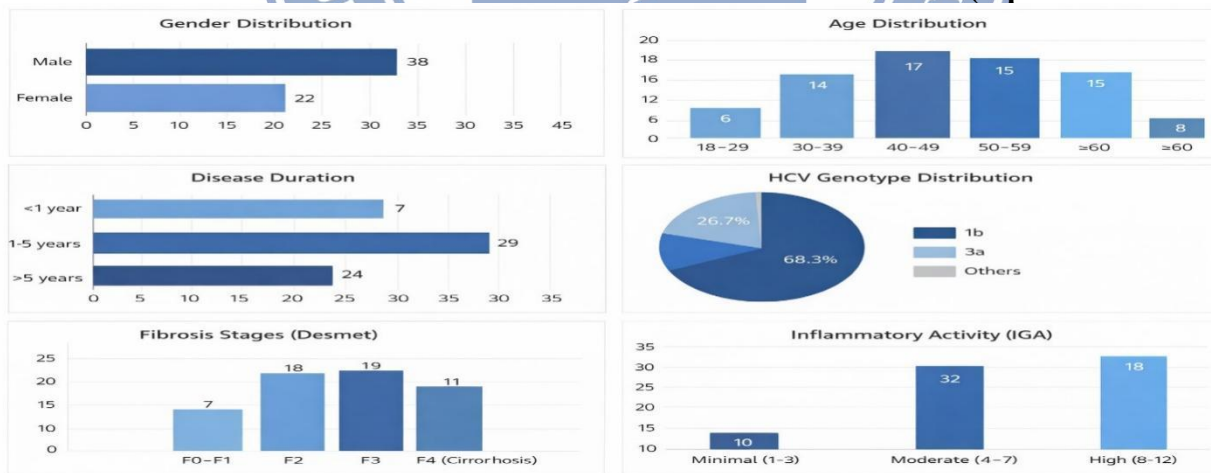


Figure 1 (placeholder): Insert microphotograph demonstrating low-grade Ki-67 staining in periportal regions.

Figure 2. Moderate Bcl-2 positive expression in perilobular regions and low-grade positivity in centrilobular hepatocytes (representative image).

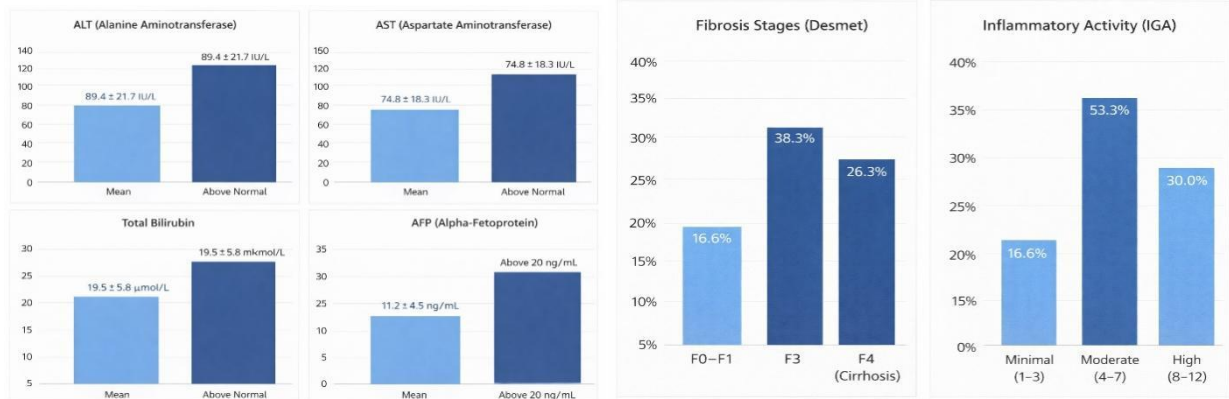


Figure 2 (placeholder): Insert microphotograph demonstrating Bcl-2 staining pattern in CHC liver tissue

Figure 3. High-grade Bcl-2 positive expression in periportal/perilobular hepatocytes with sinusoidal dilatation (representative image).

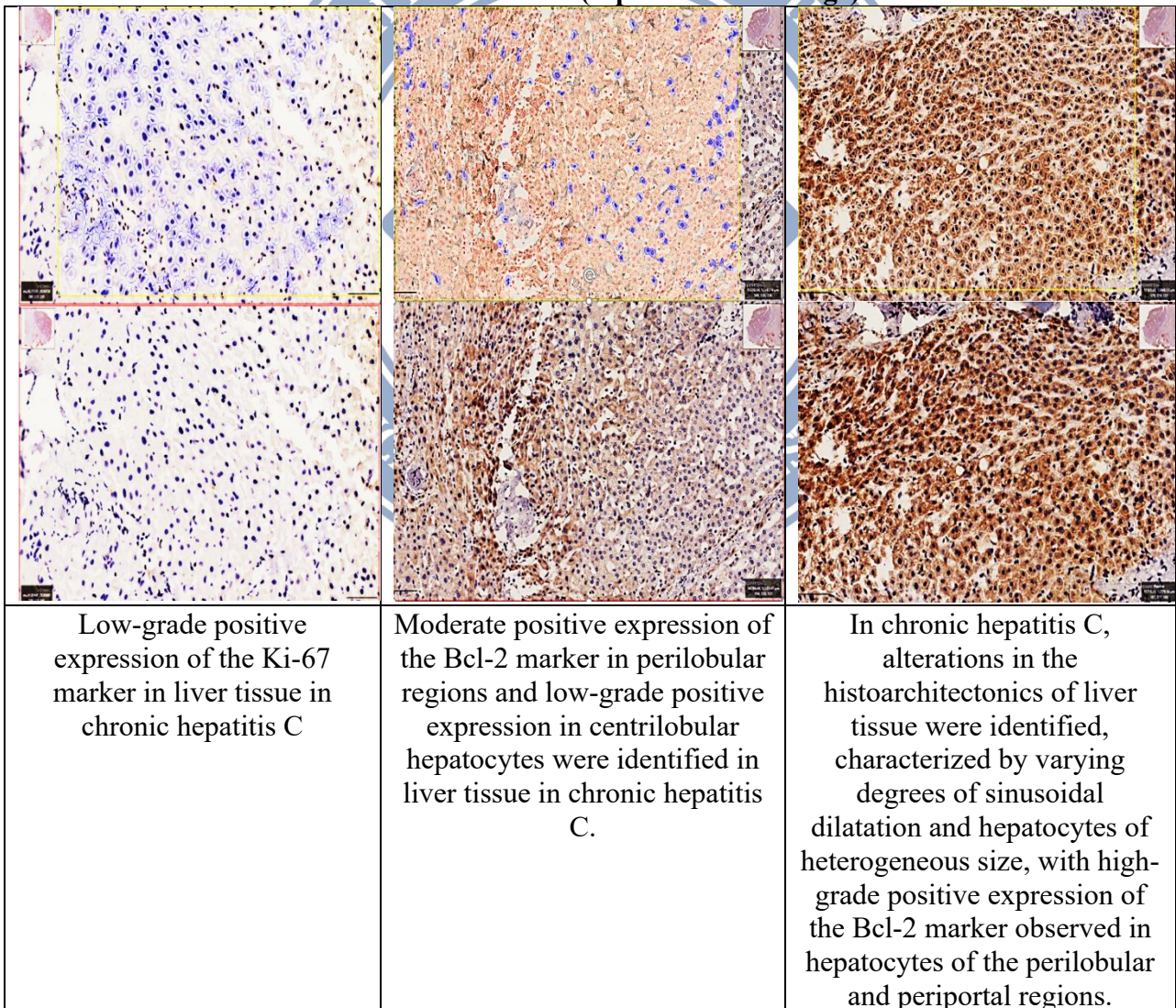


Figure 3 (placeholder): Insert microphotograph demonstrating high-grade Bcl-2 expression in heterogeneous hepatocyte populations.



TOSHKENT TIBBIYOT AKADEMIYASI URGANCH FILIALI
JANUBIY OROLBO‘YI TIBBIYOT JURNALI
2 - TOM, 2 - SON. 2026
14.00.00 - TIBBIYOT FANLARI ISSN: 3093-8740

Discussion

This study demonstrates a complex spectrum of premalignant pathomorphological changes in CHC, characterized by progressive fibrosis, increasing necroinflammatory activity, immune-cell infiltration, and stromal remodeling. The positive association between fibrosis stage and IGA activity is consistent with the concept that chronic inflammation promotes fibrogenesis and sets a biological background for malignant transformation [3,4,20]. The observed expansion of Ki-67-positive stromal/mesenchymal cells in advanced fibrosis supports the role of proliferative remodeling in septal formation and regenerative nodule development. Increased SMA expression in periportal/septal zones indicates stellate cell activation and myofibroblast differentiation, which are core mechanisms in extracellular matrix deposition and scar formation [5,7,8,18]. Kupffer cell hyperplasia and macrophage clustering in advanced fibrosis reflect persistent antigenic stimulation and cytokine-driven modulation of fibrogenesis (e.g., TGF- β , TNF- α pathways) described in prior studies [7,9,19]. From a practical perspective, combined histological grading/staging together with IHC markers may refine risk stratification for HCC and help tailor surveillance intensity, including AFP monitoring and follow-up biopsy intervals when clinically appropriate [1,2,9,17].

Conclusion

1. Premalignant liver changes in CHC are frequently represented by fibrosis stages F2–F4, moderate to high inflammatory activity, steatosis, and Kupffer cell hyperplasia.
2. A positive correlation exists between fibrosis stage and necroinflammatory activity (IGA), supporting a close linkage between inflammation and fibrogenesis.
3. Increased Ki-67 proliferative activity and elevated SMA expression with advancing fibrosis suggest active stromal remodeling and stellate cell activation.
4. Integrated histological and IHC assessment (Ki-67, SMA and selected immune/macrophage parameters) can improve identification of high-risk patients for HCC development.

References

1. Abdullaev U. Etiology of hepatocellular carcinoma: special emphasis on fatty liver disease. *Journal of Research on Trauma and Disability*. 2026;3(3):26–36.
2. Abdullaev O. Prevalence of hepatitis C in the Khorezm region. *Scientific Journal of Applied and Medical Sciences*. 2026;3(3):189–196.
3. Yuldoshev BS, Abdullaev UR, Xodjaniyozov AA, Sultanov BB. Histological and immunohistochemical assessment of the liver in patients with chronic hepatitis C. *Folk Medicine and Modern Healthcare: New Approaches and Current Issues*. 2026;3(3):45–52.
4. Karev VE. Clinical and immunomorphological aspects of the pathogenesis of chronic HBV and HCV infection. Doctoral dissertation abstract (Medical Sciences). Saint Petersburg; 2016.
5. Assato AK, et al. Immunohistochemical assessment of lymphatic vessels in human livers with chronic hepatitis C: relationship to histological variables. *Arquivos de Gastroenterologia*. 2022;59(1):58–64.
6. Bunimovich AA, Urusova MS, Solovyova TS. Relevance of morphological diagnostics of HCV infection. *Proceedings of the Russian Military Medical Academy*. 2020;2(S1):33–35.
7. Sherifova AI, Parsadanyan AM. Predictors of liver cancer development: a review. *Creative Surgery and Oncology*. 2023;13(3):229–237.
8. Vorobyeva OV, Lastochkin AV. Clinical and morphological case of liver cirrhosis development associated with viral hepatitis in a young patient. *Infection and Immunity*. 2021;11(4):784–788.
9. Miyaaki H, et al. Pathomorphological study of small nodular lesions in hepatitis C virus-related cirrhosis. *Oncology Reports*. 2005;14(6):1469–1474.
10. Prokopovich MV, et al. Pathomorphological changes in the liver caused by hepatitis B and C viruses in deceased HIV-infected individuals. (Journal details to be specified). 2023;5(4):18–28.



TOSHKENT TIBBIYOT AKADEMIYASI URGANCH FILIALI
JANUBIY OROLBO‘YI TIBBIYOT JURNALI
2 - TOM, 2 - SON. 2026
14.00.00 - TIBBIYOT FANLARI ISSN: 3093-8740

11. Kureljušić B, et al. Morphological and immunophenotypic characteristics of the liver in swine naturally infected with hepatitis E virus. *Veterinaria Italiana*. 2021;57(4):287–295.
12. Moroz LV, Chichirelo-Konstantynovych KD, Havrylyuk AO. Clinical and morphological liver changes in viral hepatitis E: experience from own observations. (Journal details to be specified).
13. **Abdullaev, U.** *Etiology of hepatocellular carcinoma: special emphasis on fatty liver disease.* **Journal of Research on Trauma and Disability**, 2026; 3(3): 26–36.
14. **Abdullaev, O.** *Prevalence of hepatitis C in the Khorezm region.* **Scientific Journal of Applied and Medical Sciences**, 2026; 3(3): 189–196.
15. **Yuldoshev, B.S., Abdullaev, U.R., Xodjaniyozov, A.A., Sultanov, B.B.** *Histological and immunohistochemical assessment of the liver in patients with chronic hepatitis C.* **Folk Medicine and Modern Healthcare: New Approaches and Current Issues**, 2026; 3(3): 45–52. (journal issue/pages can be adjusted if officially available)
16. **Yuldashev, B.S., Abdullaev, U.R.** *Liver histopathology in patients with chronic hepatitis C virus infection.* **Bulletin of the Association of Pulmonologists of Central Asia**, 2026; 11(6): 13–22.
17. Kalandarov J.K., Ruziev Sh.I. Iatrogenic pathology in gynecological practice. *Medical and Natural Sciences*. 2023;4(4):504–508.
18. Republican Scientific and Practical Center of Forensic Medical Examination. Archival materials (2015–2024). Uzbekistan.
19. Kalandarov J.K., Ruziev Sh.I. Forensic medical assessment of defects in obstetric and gynecological care. *Bulletin of the Tashkent Medical Academy*. 2023;(Special Issue):235–237.
20. Kalandarov J.K., Ruziev Sh.I. Iatrogenic pathology in obstetric and gynecological practice: current state of the problem. *Pediatrics: Scientific and Practical Journal of the Tashkent Pediatric Medical Institute*. 2023:381–385.
21. Kalandarov J.K., Ruziev Sh.I. Improvement of commission-based forensic medical assessment criteria for defects in obstetric care. *South Aral Sea Medical Journal*. 2025:54–60.
22. Kalandarov J.K., Kuziev U.S. Medical defects in obstetric and gynecological care and their forensic medical evaluation. *South Aral Sea Medical Journal*. 2025:166–170.
23. Kalandarov J.K.. Medical errors in obstetric and gynecological practice (literature review). In: *Proceedings of the Republican Online Scientific-Practical Conference “Current Issues of Modern Medicine in Epidemic Conditions”*. Termez; 2021.
24. Kalandarov J.K. Critical conditions and iatrogenic complications in obstetrics (literature review). In: *Proceedings of the International Scientific-Practical Conference “Current Morphological Problems Associated with the COVID-19 Pandemic”*. Urgench; 2021. p. 60.